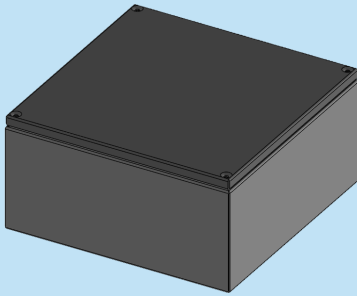


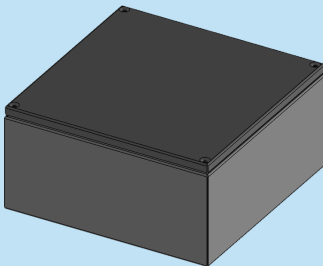
:: STAINLESS STEEL TERMINAL BOX WITH MOUNTING RAILS



ORDER NO AISI 304	ORDER NO AISI 316	TYPE	DESCRIPTION	DIMENSIONS (WxHxD)mm	THICKNESS	QTY
771 100	771 500	SSTNB1.5.1.5-80	Stainless Steel Terminal Box with MR	150x150x80	1.0mm	01
771 102	771 502	SSTNB1.5.3-80	Stainless Steel Terminal Box with MR	150x300x80	1.0mm	01
771 104	771 504	SSTNB2.2-80	Stainless Steel Terminal Box with MR	200x200x80	1.0mm	01
771 106	771 506	SSTNB2.3-80	Stainless Steel Terminal Box with MR	200x300x80	1.0mm	01
771 120	771 520	SSTNB1.5.1.5-120	Stainless Steel Terminal Box with MR	150x150x120	1.2mm	01
771 122	771 522	SSTNB1.5.3-120	Stainless Steel Terminal Box with MR	150x300x120	1.2mm	01
771 124	771 524	SSTNB1.75.1.75-120	Stainless Steel Terminal Box with MR	175x175x120	1.2mm	01
771 126	771 526	SSTNB2.2-120	Stainless Steel Terminal Box with MR	200x200x120	1.2mm	01
771 128	771 528	SSTNB2.3-120	Stainless Steel Terminal Box with MR	200x300x120	1.2mm	01
771 130	771 530	SSTNB2.4-120	Stainless Steel Terminal Box with MR	200x400x120	1.2mm	01
771 132	771 532	SSTNB3.3-120	Stainless Steel Terminal Box with MR	300x300x120	1.2mm	01

Above SS Terminal Box consists of cabin, Cover with screws & Mounting Rails.

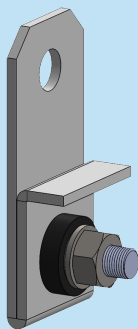
:: STAINLESS STEEL TERMINAL BOX WITH MOUNTING PLATE



ORDER NO AISI 304	ORDER NO AISI 316	TYPE	DESCRIPTION	THICKNESS	DIMENSIONS (W)mm	QTY
771 200	771 600	SSTNB1.5.1.5-80	Stainless Steel Terminal Box With MP	1.0mm	150x150x80	01
771 202	771 602	SSTNB1.5.3-80	Stainless Steel Terminal Box With MP	1.0mm	150x300x80	01
771 204	771 604	SSTNB2.2-80	Stainless Steel Terminal Box With MP	1.0mm	200x200x80	01
771 206	771 606	SSTNB2.3-80	Stainless Steel Terminal Box With MP	1.0mm	200x300x80	01
771 220	771 620	SSTNB1.5.1.5-120	Stainless Steel Terminal Box With MP	1.2mm	150x150x120	01
771 222	771 622	SSTNB1.5.3-120	Stainless Steel Terminal Box With MP	1.2mm	150x300x120	01
771 224	771 624	SSTNB1.75.1.75-120	Stainless Steel Terminal Box With MP	1.2mm	175x175x120	01
771 226	771 626	SSTNB2.2-120	Stainless Steel Terminal Box With MP	1.2mm	200x200x120	01
771 228	771 628	SSTNB2.3-120	Stainless Steel Terminal Box With MP	1.2mm	200x300x120	01
771 230	771 630	SSTNB2.4-120	Stainless Steel Terminal Box With MP	1.2mm	200x400x120	01
771 232	771 632	SSTNB3.3-120	Stainless Steel Terminal Box With MP	1.2mm	300x300x120	01

Above SS Terminal Box consists of cabin, Cover with screws & Mounting Plate

:: WALL MOUNTING BRACKET STAINLESS STEEL TERMINAL BOX



ORDER NO AISI 304	ORDER NO AISI 316	TYPE	DESCRIPTION	QTY
773 990	773 993	WMB-TNB	Wall Mounting Bracket - Stainless Steel Terminal Box	01 Set

Qty : 1Set = 4Pcs